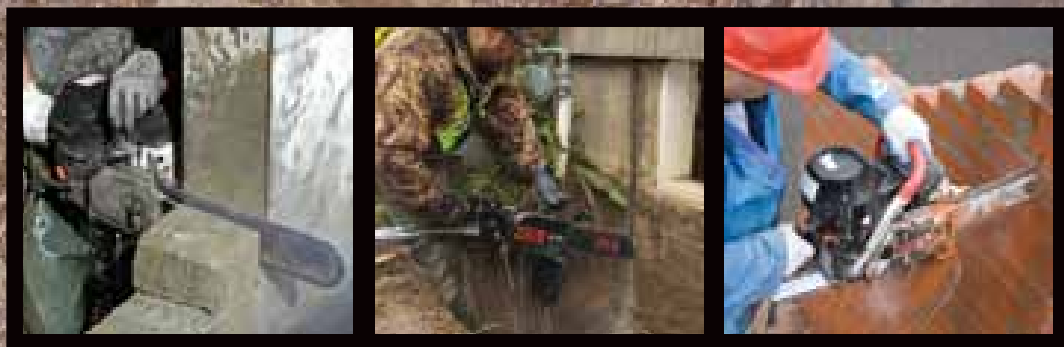




**Diamond Tools and Equipment  
for Construction and Infrastructure**



**2014**

**PRODUCT GUIDE & MASTER PRICE LIST**



# DEEP CUTS SQUARE CORNERS TIGHT SPACES

## ABOUT ICS®

Before 1990 Diamond Chain Technology™ and concrete cutting chain saws did not exist. Now, 20 years after ICS invented and pioneered the technology, we're still the world leader in the category. For the past two decades, ICS has followed a relentless pursuit of product innovation and a commitment to continually deliver the best product for the job. Now, more than twenty years since the original inception, ICS is looking forward to the next twenty years of innovation.

Headquartered in Portland, Oregon USA, as a division of Blount International, ICS also maintains its European sales and distribution office in Belgium serving a global network of customers covering more than 70 countries. All of which are backed by a comprehensive support system of factory trained personnel and service centers.

If cutting concrete, stone or masonry is your game - ICS is your GAME CHANGER. Visit us at [icsbestway.com](http://icsbestway.com).

## TABLE OF CONTENTS

About ICS .....	2
Product History .....	3
Saw Selection .....	4
Chain Selection .....	5
Petrol Saws .....	6
Hydraulic Saws .....	8
Accessories .....	10

## PRODUCT HISTORY

Patented SealPRO® o-ring technology was a major improvement that advanced DCT to a new level of durability and ease of use in 2000. 2008 saw the introduction of the FORCE4® series of chain and the new 880F4 hydraulic saw, the toughest diamond chain and saw ever created by ICS.

In 2010, ICS launched the 695 Series, by far our most advanced petrol powered saw, encompassing features and benefits that truly redefine the cutting experience.

Most recently, the 890 series hydraulic saws, introduced in 2014 take all the proven qualities of the 880 saw and adds features that bring reliability, usability and serviceability to the highest level ever.



## SAW SELECTION

ICS® offers a full line of specially designed concrete chain saws to fit almost any job. All ICS saws are designed for the harsh environment of concrete cutting while delivering the unique ability to cut square corners with no over cuts, deep plunge cuts and small, precision openings, there are differences between the ICS models. We've continually improved our products with the goal of ensuring we always have the saw to fit your specific needs. Whether you need petrol or hydraulic, start by selecting the right saw for you.

### Petrol Saws – Convenience & Portability

**695GC** | Most powerful petrol saw | Excellent power to weight | Plunge cuts up to 40 cm |  
Uses MAX series diamond chain | Can be converted to use FORCE4® Chain

**695F4** | Operates FORCE4 technology | Designed for frequent heavy use | Ultimate versatility and power |  
Plunge cuts up to 40 cm






**680GC** | General purpose saw | Plunge cuts up to 35 cm | Uses MAX series diamond chain |  
Perfect for general construction occasional use

### Hydraulic Saws – Performance & Power

**890F4** | Redesigned rear handle | improved ergonomic cutting and greater durability | Smooth hydraulic power |  
Rugged die-cast aluminum body | Modular motor design for easy servicing | Designed for heavy production use |  
Uses FORCE4 technology | Available with 30 cm or 2.5 m hoses; 1/2" quick disconnects | Four guidebar lengths available – up to 63 cm | New Drive Sprocket design allows for quick replacement in the field

**890F4-FL** | Same powerful hydraulic operation as the 890F4 | Cuts as close as 4.8 mm to a wall or floor |  
Designed for frequent, heavy use | Uses FORCE4 technology | Available with 30 cm or 2.5 m hoses; 1/2" quick disconnects | Four guidebar lengths available – up to 63 cm | New Drive Sprocket design allows for quick replacement in the field

**814PRO** | General purpose saw | Extremely lightweight and easy to use | Plunge cuts up to 33 cm |  
Smooth hydraulic power

SAW SELECTION CHART		FREQUENCY OF USE			
		DAILY	WEEKLY	MONTHLY	QUARTERLY
680GC					
695GC					
695F4					
814PRO					
890F4					



# CHAIN SELECTION

Diamond chains are not all created equal, so insist on Diamond Chains from ICS®, the people who invented the technology. As the inventors of Diamond Chain Technology™, ICS is committed to continually improving the quality and versatility of this important advance in concrete cutting; chains specifically designed for different saw types as well as the many different materials you encounter on the job. Choosing the right chain for your needs is essential to getting the best value for your purchase.

## Diamond Chain Technology | EuroMAX | ProFORCE



### A Breakthrough Value in Diamond Chain

After two decades of innovation, ICS delivers a new value proposition designed specifically for the markets of Europe. EuroMAX® diamond chain for cutting concrete and masonry offers unprecedented performance and cuts faster out of the box. Look for the EuroMAX castle top diamond segment, spend less and get more work done with your ICS concrete chain saw.


**EuroMAX Diamond Chain** | Segments designed for general use | Laser welded to patented chain chassis | Contains patented SealPRO® o-ring technology for longer life | Available for all ICS GC petrol powered saws

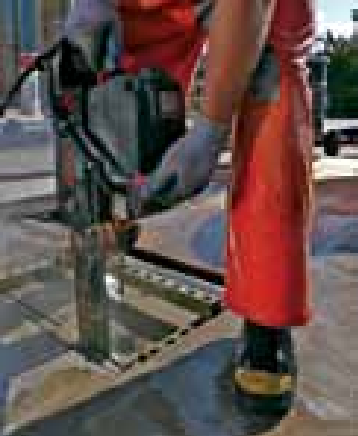
**TwinMAX Diamond Chain** | Segment designed for specialty applications

### FORCE4® – Meet the New Force in Concrete Cutting Technology

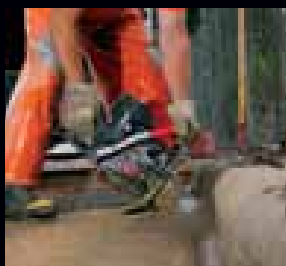
A revolution in Diamond Chain Technology, ProFORCE™ series diamond chains deliver unrivaled performance in professional and heavy use cutting applications.

**ProFORCE™ Series Diamond Chain** | Strongest, most durable, patented chain design | Laser welded diamond segments | Contains SealPRO o-ring technology for longer life | Designed for heavy, professional use | Available for hydraulic and select petrol powered saws

CHAIN SELECTION CHART	Soft stone/ Abrasive/Brick	Natural Stone	Medium Concrete/ Light Reinforcement	Hard Concrete/ Heavy Reinforcement
 <i>For everyday use</i>	♦	♦	♦	
TwinMAX™ Plus - For harder materials		♦	♦	♦
TwinMAX™ Abrasive - Abrasive materials	♦			
ProFORCE™ - All purpose		♦	♦	♦
ProFORCE™ L - Longer life		♦	♦	♦
ProFORCE™ S - Faster cutting speed			♦	♦
ProFORCE™ Abrasive - Perfect for brick	♦			



## PETROL POWERED SAWS



### 680GC

- > 77 cc, 2-Stroke engine
- > 3.7 kW (5 hp)
- > 9.6 kg
- > 30 or 35 cm guidebars

## Powerheads and Packages

### 680GC



P/N	DESCRIPTION
545090	680GC Powerhead
545100	680GC-12 Saw Package with 30 cm Guidebar and EuroMAX-29 chain
545101	680GC-14 Saw Package with 35 cm Guidebar and EuroMAX-32 chain

### 695GC



P/N	DESCRIPTION
544106	695GC Powerhead
544109	695GC-14 Saw Package with 35 cm Guidebar and EuroMAX-32 chain
544110	695GC-16 Saw Package with 40 cm Guidebar and EuroMAX-35 chain

### 695F4

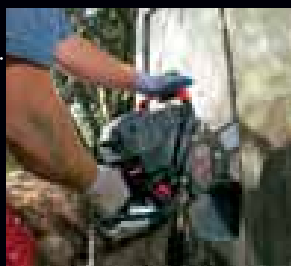


P/N	DESCRIPTION
545089	695F4 Powerhead
553463	695F4 Saw Package with 30 cm FORCE4 Guidebar and ProFORCE-25 chain

## 2-STROKE OIL For Best Results Use ICS 2-Stroke Oil



P/N	DESCRIPTION
505880	2-Stroke Oil, 4% (25:1) Mix, 200 ml Bottles (6-pack)
505885	2-Stroke Oil, 4% (25:1) Mix, 200 ml Bottles (24-pack)



## 695GC

- > 94 cc, 2-Stroke engine
- > 4.8 kW (6.4 hp)
- > 9.6 kg
- > 35 or 40 cm guidebars



## 695F4

- > All the benefits of a 695GC
- > PLUS the ability to operate ProFORCE™ diamond chains, the strongest chains in the business

## Diamond Chains and Guidebars

### 680GC REPLACEMENT CONSUMABLES

30 CM	
P/N	DESCRIPTION
540020*	EuroMAX-29,30 cm chain
71704	TwinMAX-29 Plus 30 cm chain
71554	TwinMAX-29 Abrasive 30 cm chain

Diamond Chains



35 CM	
P/N	DESCRIPTION
540021*	EuroMAX-32,35 cm chain
71705	TwinMAX-32 Plus 35 cm chain
71610	TwinMAX-32 Abrasive 35 cm chain

Guidebars



513122	680GC Guidebar 35 cm/32 segments
--------	----------------------------------

71395	680GC Guidebar 30 cm/29 segments
-------	----------------------------------

\*Ask for a special MSRP price for TwinPack

### 695GC REPLACEMENT CONSUMABLES

35 CM	
P/N	DESCRIPTION
540021*	EuroMAX-32,35 cm chain
71705	TwinMAX-32 Plus 35 cm chain
71610	TwinMAX-32 Abrasive 35 cm chain

Diamond Chains



40 CM	
P/N	DESCRIPTION
540022*	EuroMAX-35,40 cm chain
71706	TwinMAX-35 Plus 40 cm chain
71611	TwinMAX-35 Abrasive 40 cm chain

Guidebars



71600	695GC Guidebar 40 cm/35 segments
-------	----------------------------------

73600	695GC Guidebar 35 cm/32 segments
-------	----------------------------------

\*Ask for a special MSRP price for TwinPack

### 695F4 REPLACEMENT CONSUMABLES

30 CM	
P/N	DESCRIPTION
531743	ProFORCE-25,30 cm chain
531745	ProFORCE-25 Premium L 30 cm chain
531739	ProFORCE-25 Premium S 30 cm chain
531747	ProFORCE-25 Abrasive 30 cm chain

Diamond Chains



40 CM	
P/N	DESCRIPTION
525342	ProFORCE-29,40 cm chain
525343	ProFORCE-29 Premium L 40 cm chain
531735	ProFORCE-29 Premium S 40 cm chain
525344	ProFORCE-29 Abrasive 40 cm chain

Guidebars



524490	695F4 Guidebar 40 cm/29 segments
--------	----------------------------------

553208	695F4 Guidebar 30 cm/25 segments
--------	----------------------------------

### 25 CM DIAMOND CHAIN & GUIDE BAR

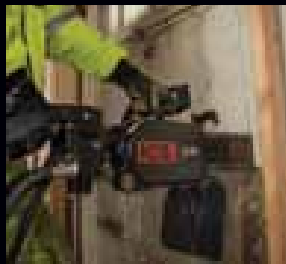


P/N	DESCRIPTION
540019*	EuroMAX-25,25 cm chain
517869	TwinMAX-25 Plus 25 cm chain
71640	TwinMAX-25 Abrasive 25 cm chain

517689	603/660GC Guidebar 25 cm/25 segments
--------	--------------------------------------

\*Ask for a special MSRP price for TwinPack

# HYDRAULIC SAWS

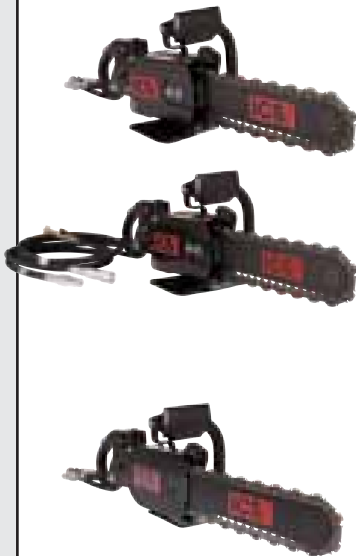


## 890F4

- > 30 l/m and 45 l/m
- > 12 kg
- > 4 cutting lengths available

## Powerheads and Packages

### 890F4/FL



P/N	DESCRIPTION
566357	890F4 Powerhead, 30 l/m, with carry case, 30 cm hose whips
566356	890F4 Powerhead, 30 l/m, with carry case, 2.5 m hose whips
566127	890F4-15 38cm Saw Package with 38 cm Guidebar, ProFORCE-29 & carry case, 30 cm hose whips
566353	890F4 Powerhead, 45 l/m, with carry case, 30 cm hose whips
566354	890F4 Powerhead, 45 l/m, with carry case, 2.5 m hose whips

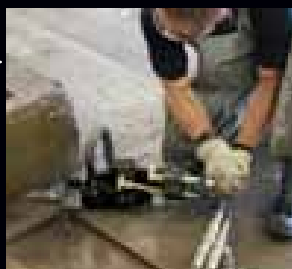
P/N	DESCRIPTION
566352	890F4-FL Powerhead, 30 l/m, with carry case, 30 cm hose whips
566350	890F4-FL Powerhead, 30 l/m, with carry case, 2.5 m hose whips

### 814PRO



P/N	DESCRIPTION
75256	814PRO Powerhead, 30 l/m
71675	814PRO-13 Saw Package with 33cm Guidebar and TwinPRO-25 chain





## 890F4-FL

- > 30 l/m
- > 12 kg
- > 4 cutting lengths available
- > Cut to within 4.8 mm of floor or wall



## 814PRO

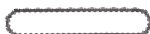
- > 30 l/m
- > 6 kg
- > 33 cm guidebar

## Diamond Chains and Guidebars

### 890F4/FL REPLACEMENT CONSUMABLES

25 CM	
P/N	DESCRIPTION
531743	ProFORCE-25,25 cm chain
531745	ProFORCE-25 Premium L 25 cm chain
531739	ProFORCE-25 Premium S 25 cm chain
531747	ProFORCE-25 Abrasive 25 cm chain
529829	890F4/FL Guidebar 25 cm/25 segments

Diamond Chains



Guidebars



50 CM	
P/N	DESCRIPTION
531749	ProFORCE-34,50 cm chain
531751	ProFORCE-34 Premium L 50 cm chain
531741	ProFORCE-34 Premium S 50 cm chain
531753	ProFORCE-34 Abrasive 50 cm chain
529767	890F4/FL Guidebar 50 cm/34 segments

38 CM	
P/N	DESCRIPTION
525342	ProFORCE-29,38 cm chain
525343	ProFORCE-29 Premium L 38 cm chain
531735	ProFORCE-29 Premium S 38 cm chain
525344	ProFORCE-29 Abrasive 38 cm chain
523080	890F4/FL Guidebar 38 cm/29 segments

Diamond Chains



Guidebars



63 CM	
P/N	DESCRIPTION
525345	ProFORCE-40,63 cm chain
525346	ProFORCE-40 Premium L 63 cm chain
531737	ProFORCE-40 Premium S 63 cm chain
525347	ProFORCE-40 Abrasive 63 cm chain
525320	890F4/FL Guidebar 63 cm/40 segments

### 814 PRO REPLACEMENT CONSUMABLES

Diamond Chains

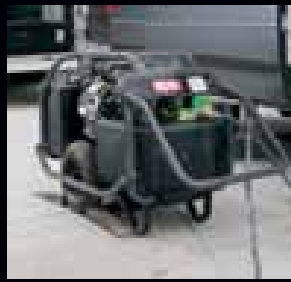


Guidebars



33 CM	
P/N	DESCRIPTION
74719	TwinPRO-25,33 cm chain
74042	814PRO Guidebar 33 cm/25 segments

## ACCESSORIES



### POWERPACK

- > Independent power source for all your hydraulic needs
- > Best in class cooling
- > Ergonomic design for easy transport to any job site

## Work-proven accessories for every job

Whether it's power for a saw or a way to keep the jobsite cleaner, there is an ICS® accessory that gets the job done. 20 years of experience and a whole lot of ingenuity has gone into making these work-proven products an indispensable complement to your ICS concrete chain saw.

## Portable Hydraulic Power

ICS® petrol operated power packs are a dependable, self-contained source of hydraulic power that offer superior cooling capacity. The functional, ergonomic design makes them easily transportable to any job site.

**P95 13.5 kW Powerpack** | Affordable hydraulic power | Exceptional cooling capability | Easy to carry package | Adjustable to 20 l/m or 30 l/m operation | Operating pressure approx 140 bar

### POWERPACKS, HYDRAULIC HOSES AND FLOW ADAPTERS



P/N	DESCRIPTION
550888	P95 13.5 kW (18 hp) Multiflow Hydraulic Powerpack, Adjustable 20 l/m or 30 l/m, with Auto Throttle, Electric Start, and Hoses
70466	7.5 m Hydraulic Hose Set, Two-way, with Couplers

P/N	DESCRIPTION
70350	Flow Adapter Valve 30 l/m

## Portable Water Tank

When water is not readily available, this fully portable, cordless, rechargeable water supply is the solution. Enough flow and pressure to operate any ICS saw.

**Portable Water Tank** | 35 liters tank capacity | Output - 4 l/m - 2.4 bar | Oversized, inflatable tires | Power Supply - Onboard rechargeable motor | Quick-connect garden hose fitting

### WATER TANK



P/N	DESCRIPTION
551529EU	Portable Water Tank



## WATER TANK

- > Fully portable
- > Inflatable wheels for easy transporting



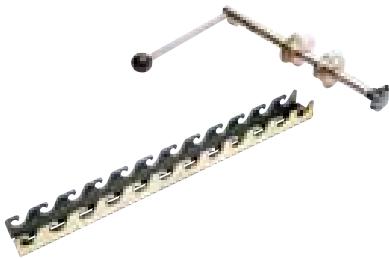
## SPEEDHOOK

- > Guide attaches to wall for straight, accurate, easier cutting
- > For use with 890F4 and 814PRO

## SpeedHook®

SpeedHook is an ingenious accessory designed to support the weight of ICS hydraulic saws, dramatically reducing operator fatigue and extending chain life. Attaching quickly and easily, SpeedHook is convertible to left-hand or right-hand operation, and expandable with 1 meter sections.

### SPEEDHOOK



P/N	DESCRIPTION
528551	890F4 SpeedHook System, includes 1 m Rail & 890F4 Saw Mounting Bracket
75254	814PRO SpeedHook System, includes 1 m Rail & 814PRO Saw Mounting Bracket
528552	SpeedHook Bracket - fits 890F4 Series
75253	SpeedHook Bracket - fits 814PRO
70554	SpeedHook 1 m Rail
70558	SpeedHook Axle Assembly - fits all SpeedHook Brackets

### MAINTENANCE PARTS



P/N	DESCRIPTION
71752	Air Filter Canister, Polyester - 680GC, 633GC, 633F4
544064	Air Filter Canister, Polyester - 695GC, 695F4
73199	Spark Plug - 633GC, 633F4
514770	Spark Plug - 680GC
544034	Spark Plug - 695GC, 695F4
73459	Fuel Filter - 680GC, 633GC, 633F4
543971	Fuel Filter - 695GC, 695F4
73935	Premium Tensioner Kit - 680GC, 633GC, 633F4
543904	Premium Tensioner Kit - 695GC, 695F4

### REPLACEMENT SPROCKETS



P/N	DESCRIPTION
70949	Drive Sprocket - fits 680, 633, and 695 Petrol Saws - GC Series
71385	Drive Sprocket - fits 814PRO
525496	Drive Sprocket - fits 633 & 695 Petrol Saws - F4 Series
525495	Drive Sprocket - fits 880F4, 853PRO, 853PRO Plus
CALL	Drive Sprocket - fits 880F4-FL, 853PRO-FL
560565	Drive Sprocket - fits 890F4
CALL	Drive Sprocket - fits 890F4-FL



**icsbestway.com**

For more information in the UK, call ICS at 020 3328 0621 email: [uksales@icsbestway.com](mailto:uksales@icsbestway.com)